

ACTpro Proximity and Keypad Reader

EM1030e, EM1040e, EM1050e, EM1060e



Introduction:

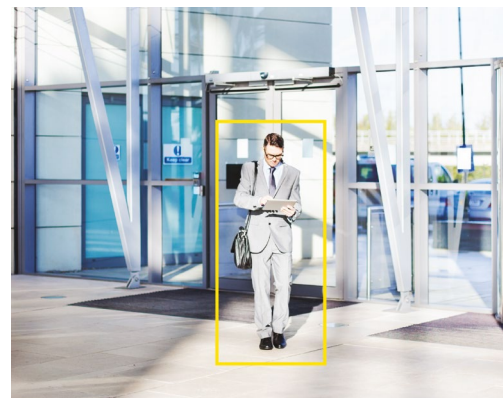
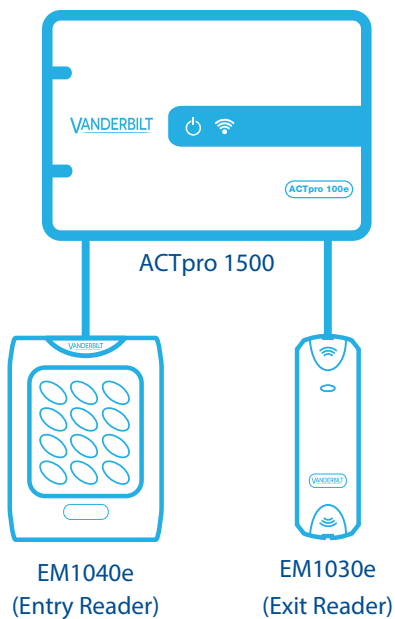
The ACTpro RFID readers are multiformat readers that support all ACT 125KHz RFID cards and fobs including HID-compatible credentials.

The ACTpro readers are available as:

- ✓ Proximity only (EM1030e / EM1040e)
- ✓ Pin & Proximity (EM1050e), for additional security
- ✓ Pin only (EM1060e), where proximity cards are not required.



ACTpro Proximity & Keypad Readers ACTpro 1500 Schematic:



VANDERBILT

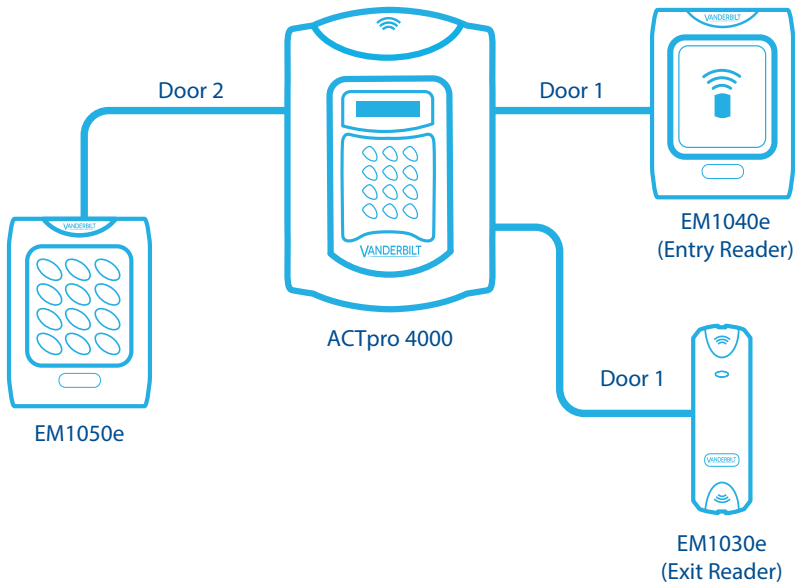
A-100709_EN

Edition date: 26-05-2020

ACTpro Proximity and Keypad Reader

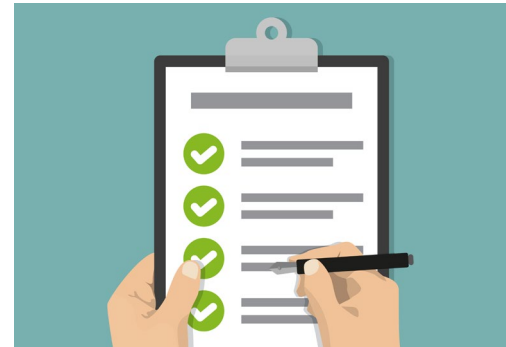
EM1030e, EM1040e, EM1050e, EM1060e

ACTpro Proximity & Keypad Readers with ACTpro 4000 Schematic:



Main Features:

- ✓ Multi-format reader
- ✓ Choice of proximity only, pin and proximity or pin only
- ✓ ACTProx Cards and Fobs supported (125KHz RFID)
- ✓ ID-compatible credentials supported (125KHz RFID)
- ✓ Indoor & outdoor installation
- ✓ Built-in buzzer
- ✓ Tri-Colour LED
- ✓ Operates between -40°C and $+70^{\circ}\text{C}$
- ✓ 5V DC to 12V DC operation
- ✓ Auto detect Clock and Data or 26-bit Wiegand Output
- ✓ Robust polycarbonate housing
- ✓ Vandal Resistant Cover (MF-VR) available for the EM1030e proximity reader



Installation Guidelines

- The ACTpro readers may be installed in exposed outdoor conditions (EM1030e - IP66)
- The maximum distance between the ACTpro reader and the ACTpro controller or door station is 100m with 12V DC (up to 30m with 5V DC)
- Use 8 core screened cable to connect the ACTpro reader to the ACTpro controller / door station
- ACTpro reader to the ACTpro controller / door station
The ACTpro readers can be paralleled for entry and exit readers to a maximum current of 500mA if powered from the ACTpro 1500 or ACTpro 100e door stations.

VANDERBILT

A-100709_EN

Edition date: 26-05-2020

ACTpro Proximity and Keypad Reader

EM1030e, EM1040e, EM1050e, EM1060e

Product Specification:

| EM1030e | |
|-----------------------|---------------------|
| Operating Voltage | 5 - 12 Volts DC |
| Current Consumption | 40 mA |
| Weight | 189g |
| Operating Temperature | -40°C and +70°C |
| Dimensions (HxWxD) | 120mm x 37mm x 15mm |
| Mounting | Surface or Flush |
| Installation | Indoor & Outdoor |
| Cabling: | 2m Pigtail lead |

| EM1040e / EM1050e / EM1060e | |
|-----------------------------|--|
| Operating Voltage | 5 - 12 Volts DC |
| Current Consumption | 40 mA |
| Weight | 130g (EM1040e), 225g (EM1050e/ EM1060e) |
| Operating Temperature | -40°C and +70°C |
| Dimensions (HxWxD) | 94mm x 130mm x 25mm |
| Mounting | Surface or Flush |
| Installation | Indoor & Outdoor |
| Cabling | Connector Blocks |

| EM1030PM | |
|-----------------------|--------------------|
| Operating Voltage | 5 - 12 Volts DC |
| Current Consumption | 40 mA |
| Weight | 61g |
| Operating Temperature | -40°C and +70°C |
| Dimensions (HxWxD) | 63mm x 58mm x 23mm |
| Mounting | Panel |
| Installation | Indoor & Outdoor |
| Cabling | Connector Blocks |



VANDERBILT

A-100709_EN

Edition date: 26-05-2020

ACTpro Proximity and Keypad Reader

EM1030e, EM1040e, EM1050e, EM1060e

Cabling Chart:

| From | To | Cable | Restriction |
|---------------|---|-----------------|---|
| ACTpro Reader | ACTpro Controller or ACTpro door stations | 8 core screened | Max distance 100m at 12V DC 30m at 5V DC |

Comparison Chart:

| Feature | EM1030e | EM1040e | EM1050e | EM1060e |
|------------------------|---------|---------|---------|---------|
| Mullion Style | Yes | | | |
| Proximity | Yes | Yes | Yes | |
| Keypad | | | Yes | Yes |
| 5 - 12V DC Operation | Yes | Yes | Yes | Yes |
| Connector Block | | Yes | Yes | Yes |
| 2m Pigtail Lead | Yes | | | |
| Vandal Resistant Cover | Yes | | | |
| IP rating | IP66 | IP65 | IP55 | IP55 |
| Impact rating | IK08 | IK10 | IK08 | IK08 |
| Potted Electronics | Yes | Yes | Yes | Yes |

Ordering Information:

| Type | Art. No. | Description | Weight* |
|---------|------------------|---|---------|
| EM1030e | V54504-F141-A100 | EM1030e ACTpro Prox 125kHz Mullion Reader | 0.189kg |
| EM1040e | V54504-F142-A100 | EM1040e ACTpro Prox 125kHz Reader | 0.130kg |
| EM1050e | V54504-F143-A100 | EM1050e ACTpro Prox 125kHz Reader with keypad | 0.225kg |
| EM1060e | ACTPRO_1060E | EM1060e ACTpro PIN ONLY Reader | 0.225kg |
| EM10C3 | ACTPROX_ISO-B | EM10C3 ACT 125kHz ISO card (10pcs) | 0.064kg |
| EM10C5 | ACTPROX_DUO-B | EM10C5 ACT 125kHz ISO + Magstripe (10pcs) | 0.064kg |
| EM10T3 | ACTPROX_FOB-B | EM10T3 ACT 125kHz Tag (10pcs) | 0.064kg |
| EM10C4 | ACTPROX_HS-B | EM10C4 ACT 125kHz Clamshell (10pcs) | 0.094kg |
| MF-VR | V54513-H110-A100 | MF-VR Vandal-proof Cover for EM/MF/EV1030e | 0.160kg |

an **ACRE**
brand

vanderbiltindustries.com

 @VanderbiltInd

 Vanderbilt Industries

Vanderbilt International Ltd.

Clonsaugh Business and Technology Park

Clonsaugh, Dublin D17 KV 84, Ireland

 +353 1 437 2560