

ACTpro Proximity and Keypad Reader

EM1030e, EM1040e, EM1050e, EM1060e



Introduction:

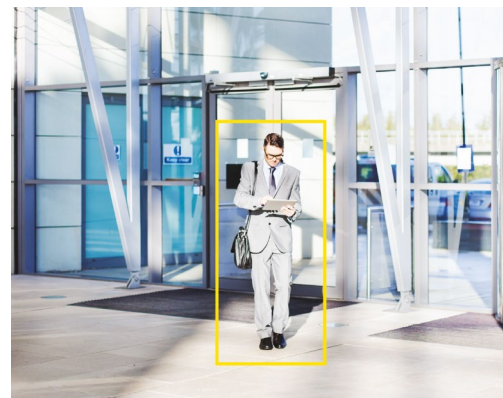
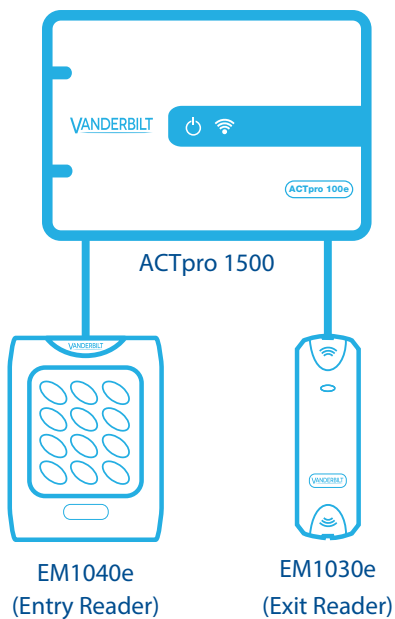
The ACTpro RFID readers are multiformat readers that support all ACT 125KHz RFID cards and fobs including HID-compatible credentials.

The ACTpro readers are available as:

- ✓ Proximity only (EM1030e / EM1040e)
- ✓ Pin & Proximity (EM1050e), for additional security
- ✓ Pin only (EM1060e), where proximity cards are not required.



ACTpro Proximity & Keypad Readers ACTpro 1500 Schematic:



VANDERBILT

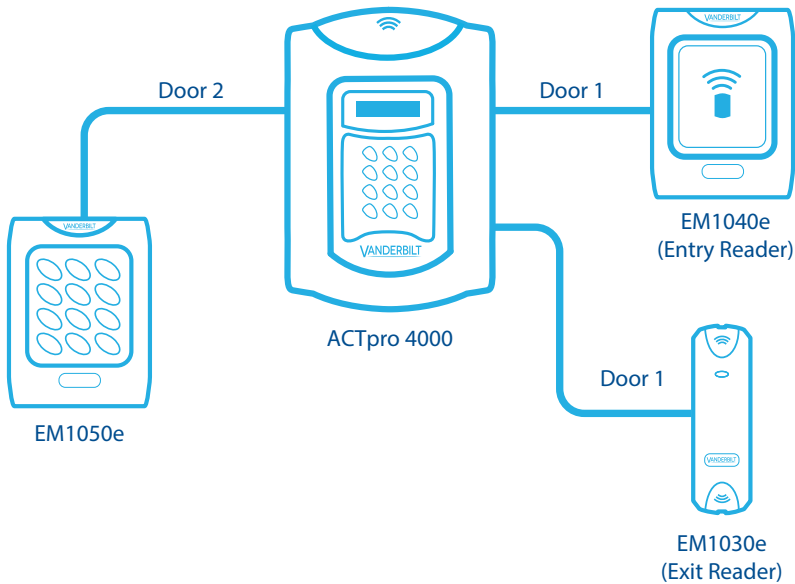
A-100709_EN

Edition date: 26-05-2020

ACTpro Proximity and Keypad Reader

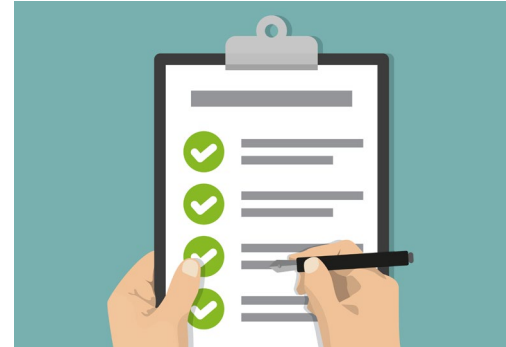
EM1030e, EM1040e, EM1050e, EM1060e

ACTpro Proximity & Keypad Readers with ACTpro 4000 Schematic:



Main Features:

- ✓ Multi-format reader
- ✓ Choice of proximity only, pin and proximity or pin only
- ✓ ACTProx Cards and Fobs supported (125KHz RFID)
- ✓ ID-compatible credentials supported (125KHz RFID)
- ✓ Indoor & outdoor installation
- ✓ Built-in buzzer
- ✓ Tri-Colour LED
- ✓ Operates between -40°C and $+70^{\circ}\text{C}$
- ✓ 5V DC to 12V DC operation
- ✓ Auto detect Clock and Data or 26-bit Wiegand Output
- ✓ Robust polycarbonate housing
- ✓ Vandal Resistant Cover (MF-VR) available for the EM1030e proximity reader



Installation Guidelines

- The ACTpro readers may be installed in exposed outdoor conditions (EM1030e - IP66)
- The maximum distance between the ACTpro reader and the ACTpro controller or door station is 100m with 12V DC (up to 30m with 5V DC)
- Use 8 core screened cable to connect the ACTpro reader to the ACTpro controller / door station
- ACTpro reader to the ACTpro controller / door station
The ACTpro readers can be paralleled for entry and exit readers to a maximum current of 500mA if powered from the ACTpro 1500 or ACTpro 100e door stations.

VANDERBILT

A-100709_EN

Edition date: 26-05-2020

ACTpro Proximity and Keypad Reader

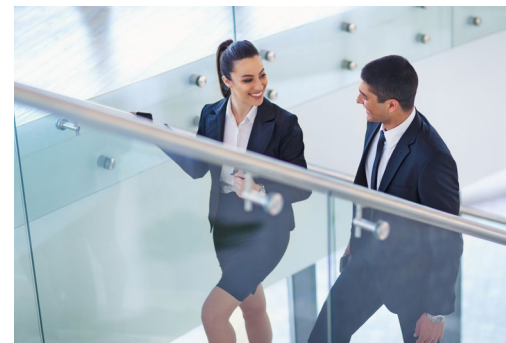
EM1030e, EM1040e, EM1050e, EM1060e

Product Specification:

EM1030e	
Operating Voltage	5 - 12 Volts DC
Current Consumption	40 mA
Weight	189g
Operating Temperature	-40°C and +70°C
Dimensions (HxWxD)	120mm x 37mm x 15mm
Mounting	Surface or Flush
Installation	Indoor & Outdoor
Cabling:	2m Pigtail lead

EM1040e / EM1050e / EM1060e	
Operating Voltage	5 - 12 Volts DC
Current Consumption	40 mA
Weight	130g (EM1040e), 225g (EM1050e/ EM1060e)
Operating Temperature	-40°C and +70°C
Dimensions (HxWxD)	94mm x 130mm x 25mm
Mounting	Surface or Flush
Installation	Indoor & Outdoor
Cabling	Connector Blocks

EM1030PM	
Operating Voltage	5 - 12 Volts DC
Current Consumption	40 mA
Weight	61g
Operating Temperature	-40°C and +70°C
Dimensions (HxWxD)	63mm x 58mm x 23mm
Mounting	Panel
Installation	Indoor & Outdoor
Cabling	Connector Blocks



VANDERBILT

A-100709_EN

Edition date: 26-05-2020

ACTpro Proximity and Keypad Reader

EM1030e, EM1040e, EM1050e, EM1060e

Cabling Chart:

From	To	Cable	Restriction
ACTpro Reader	ACTpro Controller or ACTpro door stations	8 core screened	Max distance 100m at 12V DC 30m at 5V DC

Comparison Chart:

Feature	EM1030e	EM1040e	EM1050e	EM1060e
Mullion Style	Yes			
Proximity	Yes	Yes	Yes	
Keypad			Yes	Yes
5 - 12V DC Operation	Yes	Yes	Yes	Yes
Connector Block		Yes	Yes	Yes
2m Pigtail Lead	Yes			
Vandal Resistant Cover	Yes			
IP rating	IP66	IP65	IP55	IP55
Impact rating	IK08	IK10	IK08	IK08
Potted Electronics	Yes	Yes	Yes	Yes

Ordering Information:

Type	Art. No.	Description	Weight*
EM1030e	V54504-F141-A100	EM1030e ACTpro Prox 125kHz Mullion Reader	0.189kg
EM1040e	V54504-F142-A100	EM1040e ACTpro Prox 125kHz Reader	0.130kg
EM1050e	V54504-F143-A100	EM1050e ACTpro Prox 125kHz Reader with keypad	0.225kg
EM1060e	ACTPRO_1060E	EM1060e ACTpro PIN ONLY Reader	0.225kg
EM10C3	ACTPROX_ISO-B	EM10C3 ACT 125kHz ISO card (10pcs)	0.064kg
EM10C5	ACTPROX_DUO-B	EM10C5 ACT 125kHz ISO + Magstripe (10pcs)	0.064kg
EM10T3	ACTPROX_FOB-B	EM10T3 ACT 125kHz Tag (10pcs)	0.064kg
EM10C4	ACTPROX_HS-B	EM10C4 ACT 125kHz Clamshell (10pcs)	0.094kg
MF-VR	V54513-H110-A100	MF-VR Vandal-proof Cover for EM/MF/EV1030e	0.160kg

an **ACRE**
brand

vanderbiltindustries.com


 @VanderbiltInd

 Vanderbilt Industries

Vanderbilt International Ltd.

Clonsaugh Business and Technology Park

Clonsaugh, Dublin D17 KV 84, Ireland

 +353 1 437 2560